



ITT

Provided by:

Holland®
APPLIED TECHNOLOGIES
www.hollandapt.com
Phone: 800-800-8464

Pure-Flo®

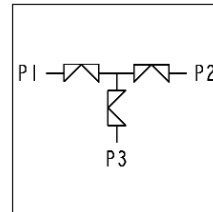
Block and Bleed (BBD, BBV)

The double block and bleed method of creating an aseptic barrier between two processes is widely utilized in the Bioprocessing industry. Traditionally three standard valves would be fabricated into the double block and bleed configuration. The Block and Bleed Drain (BBD) and Block and Bleed Vent (BBV) valves integrate these three valves into one compact block, minimizing hold up volumes and enhancing cleanability. The compact design allows for greater valve density and flexible system design.

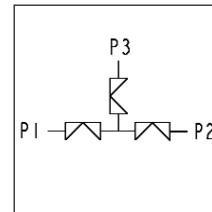


Typical Applications:

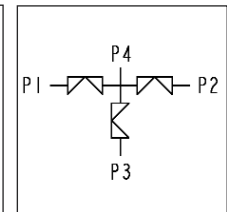
- Create steam block, isolate and clean chamber for aseptic barrier
- Block line flow for the purpose of draining the line or filling from an auxiliary source



Block & Bleed
Code: BBD



Block & Bleed
Code: BBV



Block & Bleed with
Optional Vent Port

Specifications

Standard Sizes:

- 0.5" - 2" (DN15 - 50)
- Other sizes available upon request

Materials:

- 316L ASTM - A479
- DIN 177440, 1.4435
- Other materials available upon request

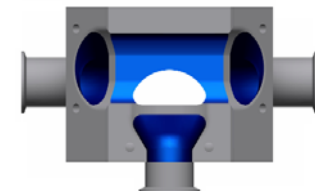
Standard End Connections:

- 14, 16, 18, 20 Gauge OD tubing
- DIN/ISO
- Tri-Clover Tri-Clamp®
- Others available upon request

Compatible with standard Pure-Flo topworks: See PFTOP for details on available manual bonnets or actuator.

Flow Path

BBD



BBV



Engineered for life



ITT

Pure-Flo®

How to Order a Block and Bleed

1.5" Block and Bleed, wrought stainless steel, Tri-Clamp ends, 25 Ra interior finish, standard exterior finish (Scotch Brite).

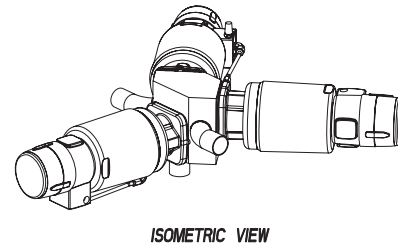
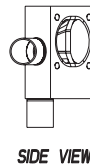
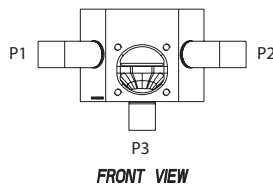
Figure Number: BBD-1.5-419-W-6-1-0

Configuration Example		BBD	1.5		419	W	6-1-0
Valve Body	Block Type	BBD					
	Valve Size		1.5				
	Type (.5" only) ¹						
	Body End Connections (P1, P2, P3) ²				419		
	Body Material					W	
	Polish Selections						6-1-0

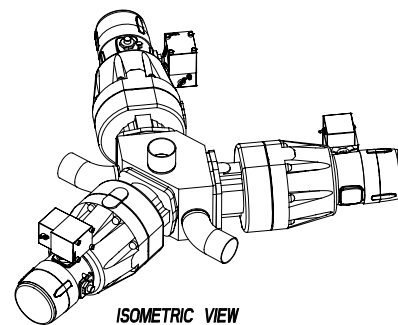
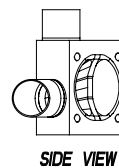
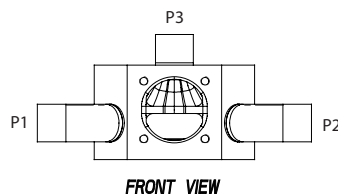
¹ For .5 inch valve, must specify Pure-Flo (PF) or Bio-Tek (BT).

² Contact the factory for additional options for discrete end connection selections. To add topworks, see BBTOP-07. For additional figure numbers, see PFORD.

BBD



BBV



Please contact Pure-Flo CA at 805-520-7200 for the latest drawing and dimensional information. The above drawing should only be used as a general reference.

Provided by:

Holland®
APPLIED TECHNOLOGIES
www.hollandapt.com
 Phone: 800-800-8464

© 2007 ITT Corporation
 Industrial Process

BBD-07

ITT Pure-Flo
 33 Centerville Road
 Lancaster, PA 17603
 (717) 509-2200
www.ittpureflo.com