



ITT

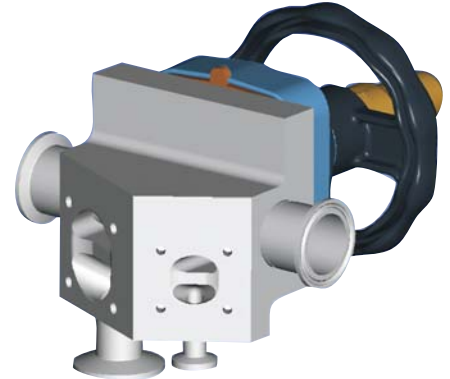
Provided by:

Holland®
APPLIED TECHNOLOGIES
www.hollandapt.com
Phone: 800-800-8464

Pure-Flo®

Integral Dual Sterile Access (IDSA)

Sterile Access valves are widely used in the Biopharmaceutical industry. Sterile Access valves allow access to the process system for sterilizing, sampling, cleaning, diverting or draining. The Integral Dual Sterile Access valve integrates access on either side of the valve, with minimal deadlegs and hold up volumes. The integrated block design provides the possibility to orient the sterile access valves up or down, which can not be easily accommodated in a sterile access fabrication.



Typical Applications:

- Cleaning/Sterilization both upstream and downstream of the control point.

Specifications

Standard Sizes:

- 0.5" - 4" (DN 15 - 100) Main Valve size
- 0.25" - 4" (DN 8 - 100) Sterile Access Valve size
- Other sizes available upon request

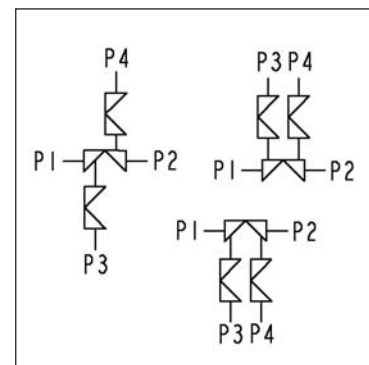
Materials:

- 316L ASTM - A479
- DN 177440, 1.4435
- AL6XN
- Hastelloy C-22 & C-276
- Other materials available upon request

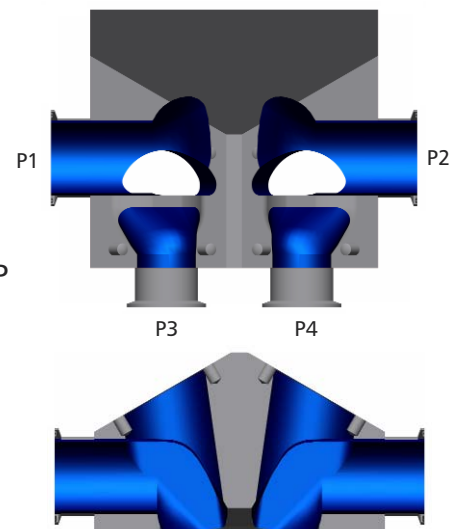
Standard End Connections:

- 14, 16, 18, 20 Gauge OD tubing
- DIN/ISO
- Tri-Clover Tri-Clamp®
- Others available upon request

Compatible with standard Pure-Flo topworks: See PFTOP brochure for details on available manual bonnets or actuators



Flow Path



Engineered for life



ITT

Pure-Flo®

How to Order an Integral Dual Sterile Access

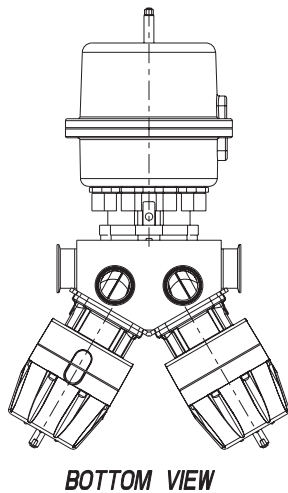
3" Integral Dual Sterile Access, wrought stainless steel, Tri-Clamp ends, 2" Second valve (P1 side) is oriented down, 2" Third valve (P2 side) is oriented down, 25 Ra interior finish, standard exterior finish (Scotch Brite).

Figure Number: IDSA-3-419-2-2-W-6-1-0

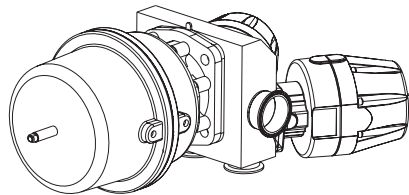
Configuration Example		IDSA	3	419	2				2				W	6-1-0
Valve Body	Block Type	IDSA												
	Main Valve Size		3											
	Main Valve End Connections (P1, P2)			419										
	Second Valve Size				2									
	Second Valve Type (.5" only) ¹													
	Second Valve End Connection (P3) ²													
	Second Valve Orientation													
	Third Valve Size								2					
	Third Valve Type (.5" only) ¹													
	Third Valve End Connection (P4) ²													
	Third Valve Orientation													
	Body Material											W		
	Polish Selections													6-1-0

¹ For .5 inch valve, must specify Pure-Flo (PF) or Bio-Tek (BT).

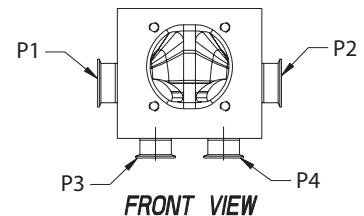
² Specify second (P3) and third (P4) end connections if they differ from those for the main valve (P1, P2). To add topworks, see BBTOP-07. For additional figure numbers, see PFORD.



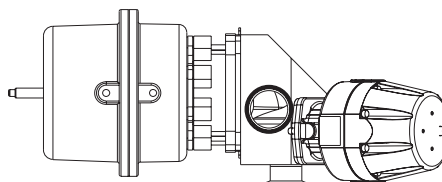
BOTTOM VIEW



ISOMETRIC VIEW



FRONT VIEW



SIDE VIEW

Please contact Pure-Flo CA at 805-520-7200 for the latest drawing and dimensional information. The above drawing should only be used as a general reference.

© 2007 ITT Corporation
Industrial Process

IDSA-07

Provided by:

Holland®
APPLIED TECHNOLOGIES
www.hollandapt.com
Phone: 800-800-8464

ITT Pure-Flo
33 Centerville Road
Lancaster, PA 17603
(717) 509-2200
www.ittpureflo.com