

QF5050S

Quaternary Diaphragm Pumps

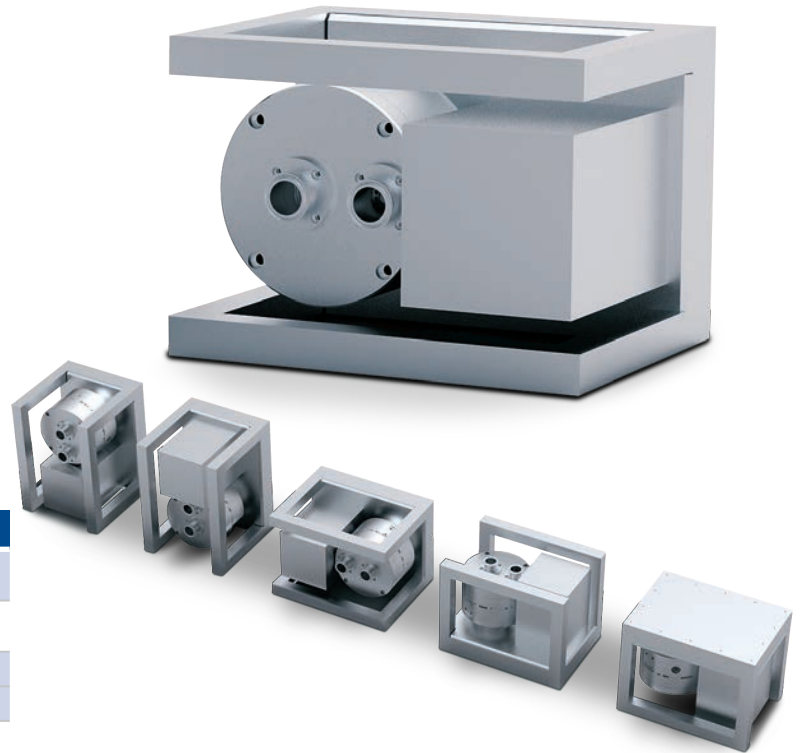
Multiple-Use

- Compact footprint
- High turn-down ratio
- Multi-option installation flexibility
- Separate control box for manual operation available

Technical Data

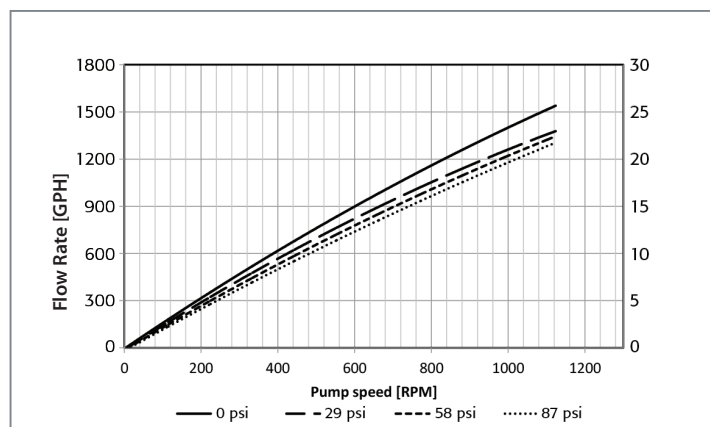
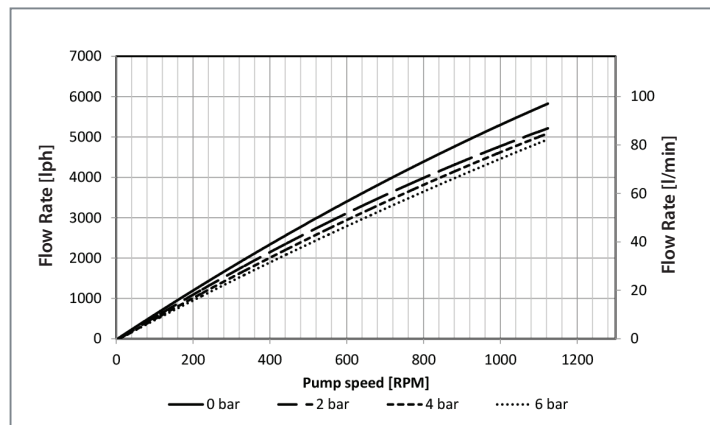
QF5050S Servo Motor		
Flow Rate Maximum:	Eccentric Shaft 6°	5000 lph (83 lpm)
Flow Rate Minimum:	Eccentric Shaft 6°	50 lph (0.83 lpm)
Pressure:	Temperature of Fluid < 40° C (104° F)	6 bar (87 psi)
	Temperature of Fluid > 40° C (104° F)	4 bar (58 psi)
Maximum Temperature:	Fluid	80° C (176° F)
	CIP	90° C (194° F)
	SIP	130° C (266° F)*
	Autoclave	130° C (266° F)*
Suction Lift Dry at 1200 rpm:	Eccentric Shaft 6°	4 - 4.5 m (13.1-14.7 ft)
Volume Specifications:	Approximated Volume per Revolution at Free Output	95 ml
	Filling Volume Without Connectors	820 ml
Connection Specification (Standard):	Connectors	1.5" TC
	Position of Connectors	Front
Product Wetted Materials (Standard):	Pump Housing	SS316L
	Valve Plate	SS316L or PP
	Diaphragms	TPE
	Valves	EPDM/SS316L
Certificates/ Proofs (Optional):	Elastomere (product wetted)	USP <88> Cl. VI; FDA21CFR177; BSE/TSE Safe
	Stainless Steel Parts (product wetted)	3.1; Surface Roughness; Ferrite Content
Motor (Standard):	Rated speed	3000 min ⁻¹ (2.66:1 reduction)
	Voltage	400 V
	Power	3 kW
Pump Dimension with Motor and Housing:	Length	440 mm (17.32")
	Width	325 mm (12.80")
	Height	320 mm (12.60")
Pump Weight with Motor and Housing:		66 kg (146 lb)

Other connection specifications, materials and motors available on request.
*With SS316L valve plate only



Performance Charts

Eccentric Shaft: 6°



Depending on the selected motor/frequency drive combination, the motor frequency and the resulting pump speed might differ.