

QF20kSU

Quaternary Diaphragm Pumps

Single-Use

- Disposable machined polypropylene pump chamber
- Easy replacement
- Installation aid

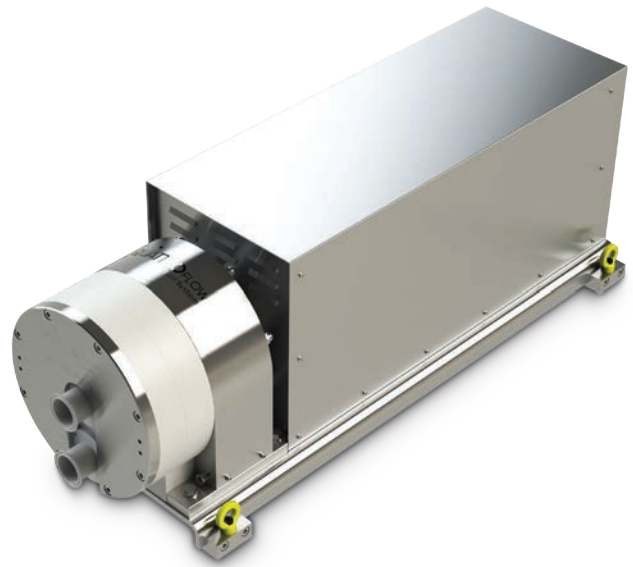
Technical Data

QF20kSU Standard Motor		
Flow Rate Maximum:	Eccentric Shaft 7°	16000 lph (267 lpm)
Flow Rate Minimum:	Eccentric Shaft 7°	1000 lph (16.7 lpm)
Pressure:	Temperature of Fluid < 40° C (104° F)	4 bar (58 psi)
	Temperature of Fluid > 40° C (104° F)	4 bar (58 psi)
Maximum Temperature:	Fluid	60° C (140° F)
Suction Lift Dry at 330 rpm:	Eccentric Shaft 7°	4 - 4.5 m (13.1-14.7 ft)
Volume Specifications:	Approximated Volume per Revolution at Free Output	470 ml
	Filling Volume Without Connectors	2950 ml
Connection Specification (Standard):	Connectors	2" TC
	Position of Connectors	Front
Product Wetted Materials (Standard):	Pump Housing	PP
	Valve Plate	PP
	Diaphragms	TPE
	Valves	EPDM/SS316L
Certificates/ Proofs (Optional):	Elastomere (product wetted)	USP <88> Cl. VI; FDA21CFR177; BSE/TSE Safe; USP 87/381/661
		Rated speed
Motor (Standard):	Voltage	230/400 V
	Power	4 kW
Pump Dimension with Motor and Housing:	Length	1152.5 mm (45.37")
	Width	400 mm (15.75")
	Height	416 mm (16.38")
Pump Weight with Motor and Housing:		190 kg (419 lb)

Other connection specifications, materials and motors available on request.

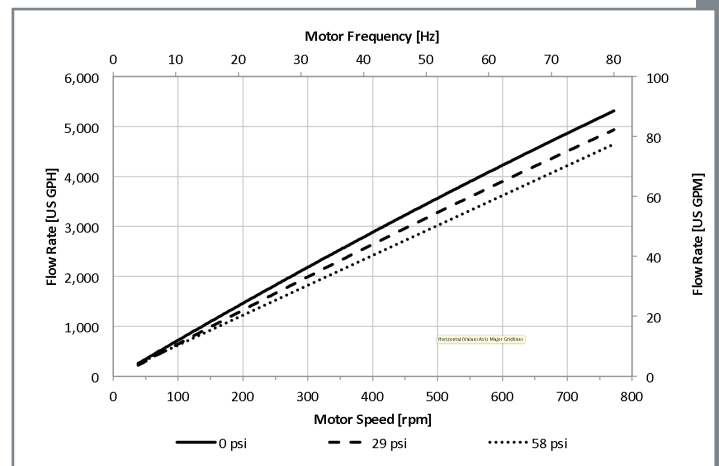
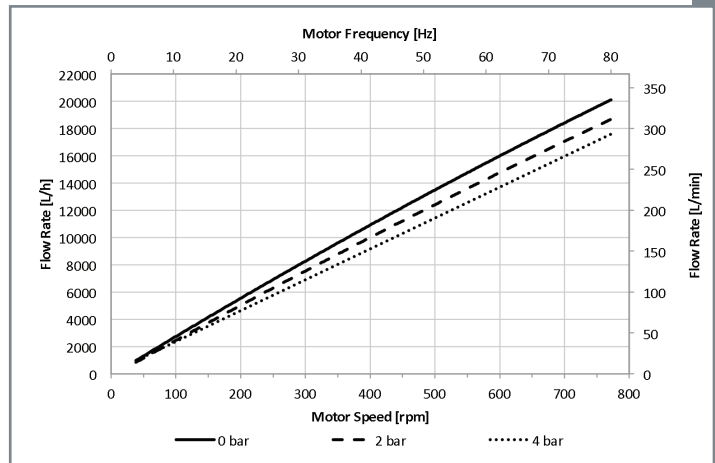
Provided by:

Holland[®]
APPLIED TECHNOLOGIES
www.hollandapt.com
 Phone: 800-800-8464



Performance Charts

Eccentric Shaft: 7°



Depending on the selected motor/frequency drive combination, the motor frequency and the resulting pump speed might differ.